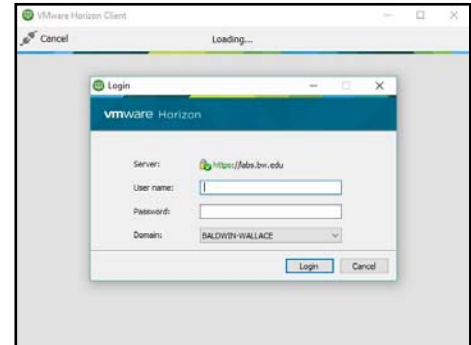


# AppStream Applications MC 120 & MC 220

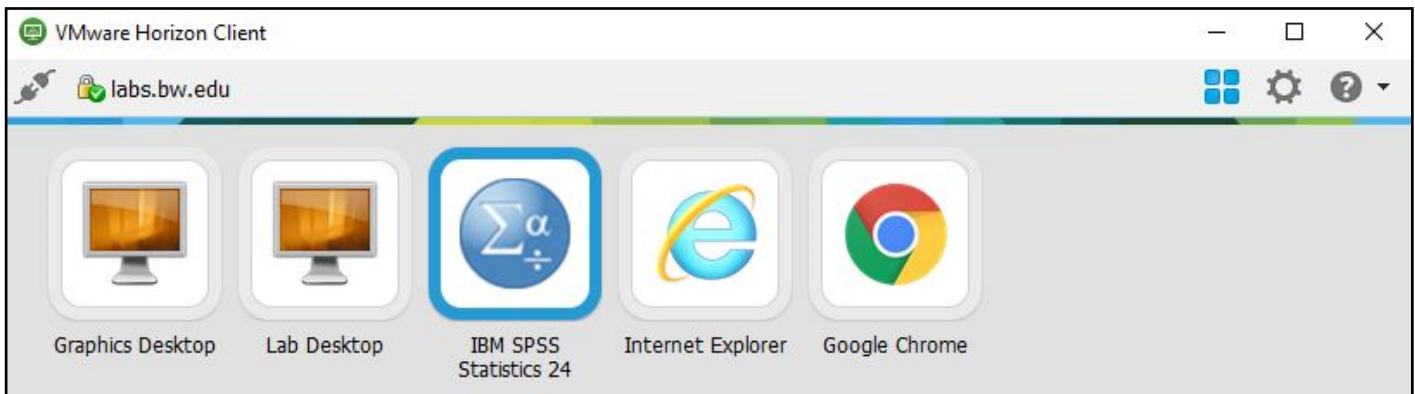
## Do I need to log in to MC 120 and MC 220 differently?

No, users will login to MC 120 and MC 220 as they have always done.



## How do I access virtual desktops and/or Appstream applications?

After logging in, users will have the option to launch a virtual desktop or an application (currently SPSS, IE and Google Chrome are available). *Note: When using an AppStream application, users should save their files to their H: Drive.*



## How do I disconnect from virtual desktops and/or Appstream applications?

**Virtual Desktops:** Users will continue to “Sign out” of the virtual desktops and then click the disconnect icon.

**AppStream Applications:** Users will need to exit or close the application then click the disconnect icon.

