

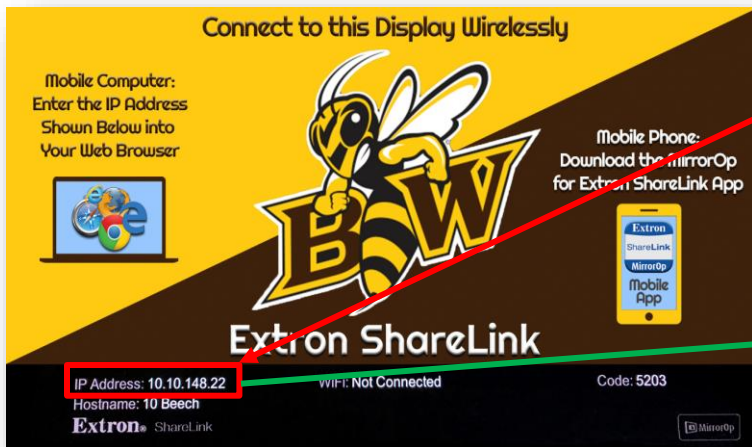


“Extron ShareLink” – Wireless Screen Sharing

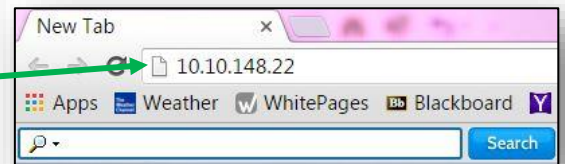
Extron ShareLink is a small device connected to a projector or screen display that uses wireless technology to facilitate screen sharing in a classroom or meeting environment. It can display anything on your device... documents, images, videos, live camera, and websites. It’s easy to use and compatible with Windows and OS X computers. To use ShareLink from an iPad or mobile phone, users must download the FREE “Extron Mirror Op” app. There are limited features from iPad and mobile phones. Extron Sharelink will also allow up to four users to project in quadrants of the screen at the same time.

NOTE! Users must be on the BW wireless network to use Extron ShareLink!

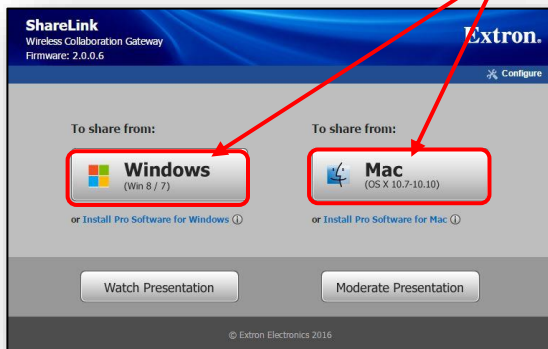
1. For rooms with a media cart (projector & screen), press the “DISPLAY ON” button. Then press the “WIRELESS” button. For rooms with an LCD screen, simply turn on the screen. The Extron start screen (shown here) will automatically be displayed.



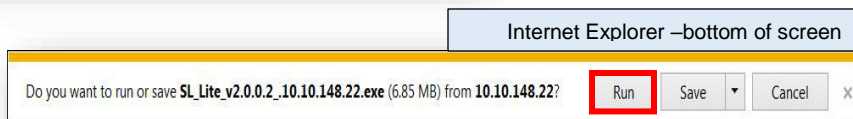
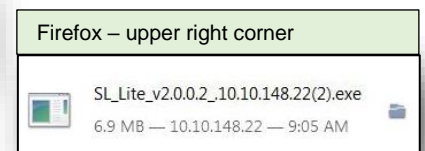
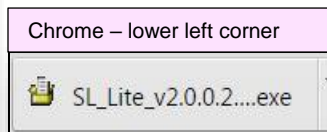
2. To project from **your mobile computer** to the room display, open any web browser and **type the IP address** displayed on the welcome screen into the URL line and press “enter.” This opens the Extron application.

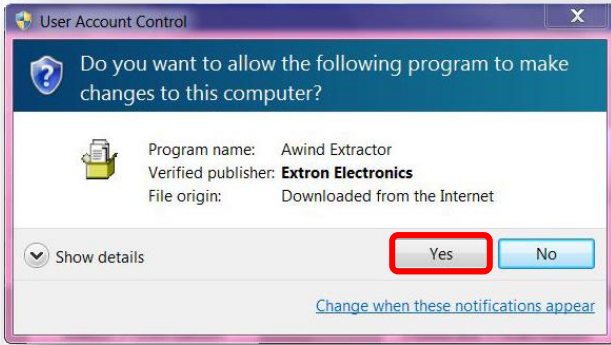


3. From the next screen, choose your device type (Windows or Mac) and click to select that option.



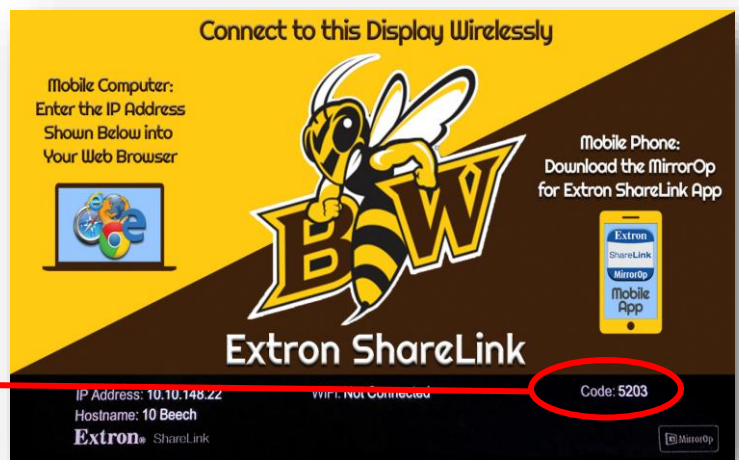
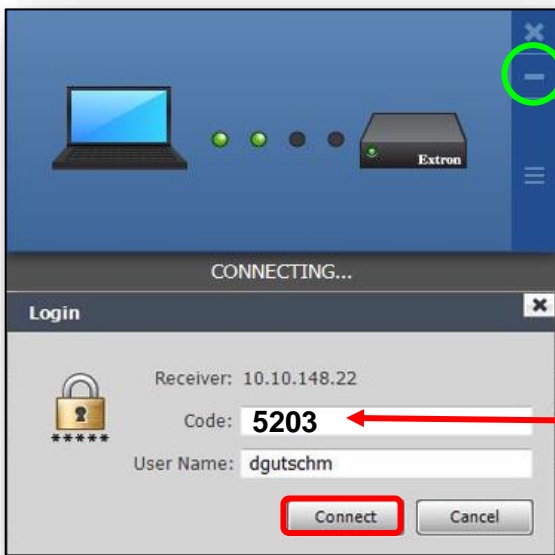
Depending on the browser you used, you will be prompted to either “Run” a file or click on a file that was downloaded to open it (as seen here).





4. Select “Yes” to download the necessary file from the Internet.

5. To finish connecting, enter the 4-digit code number that was displayed on the welcome screen and click “Connect.” (NOTE: The code changes each time all users log off of the program.)



6. You should see the Share My Screen box. Clicking the “Play” button (▶) will project a users’ device on the full display screen. If multiple users wish to share the four quadrants of the screen, each will choose one from the Drop Down Menu.

NOTE: When multiple quadrants are active, only the user in the upper left (quadrant 1) has control of the audio output.



7. Use the minimize buttons (circled in green above) to remove the two ShareLink boxes from the display.

NOTE: If a user leaves the room and you need to do a “force quit” to disconnect them from the ShareLink display, call the IT HelpDesk (x7000) for assistance & instructions.